

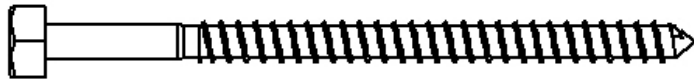
## **MAS90: 5043-43190**

**7109TWR WRANGLER/HIGH SIERRA**

**QTY:**

**DESCRIPTION:**

24	1/4 X 4 HEX LAG BLK
24	3/16 USS FL WASHER BLK
20	6 X 1 1/4 PHIL FLAT PARTICLE BOARD SCREW
4	1/2 X 3 FLUTED DOWEL



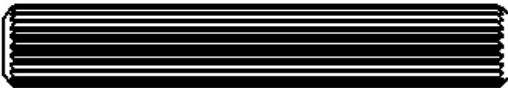
**LAG BOLT**



**WASHER**



**PHIL FLAT PARTICLE BOARD SCREW**



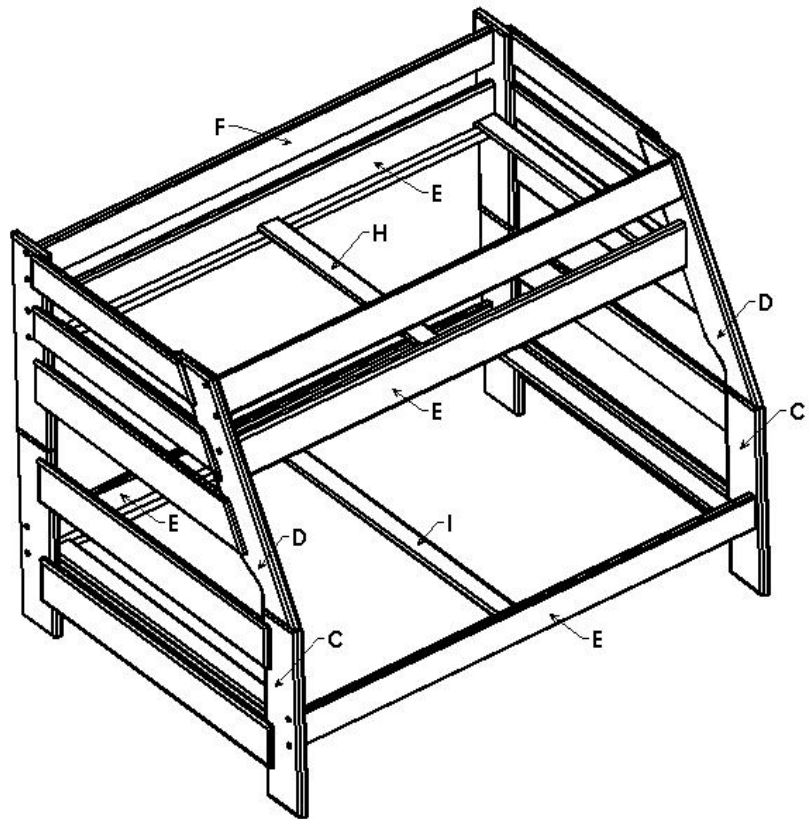
**FLUTED DOWEL**

**HIGH SIERRA**  
**TWIN/FULL BUNK**

**00255**

**PARTS LIST:**

- A) 24-4 1/4" Lag Bolts
- B) 24-Black Steel Washers
- C) 2 -Bottom End Assemblies
- D) 2 -Top End Assemblies (Right and Left)
- E) 4 -7" x 75" Mattress Rails w/Support Cleats
- F) 2 -5" x 75" Guard Rails
- G) 4 -1/2" x 3" Wooden Dowels
- H) 3 -3 1/2" x 38 1/2" Mattress Supports
- I) 3 -3 1/2" x 53 1/2" Mattress Supports
- J) 20-1 1/4" Wood Screws



**TOOLS REQUIRED:**

- 1) 7/16" Wrench or Socket Wrench
  - 2) Phillips Head Screwdriver
- Recommended: Electric driver with 7/16" socket**

A FOUNDATION IS REQUIRED WITH 3 SLAT CONFIGURATION

**Make sure you have all parts before beginning assembly. If you need a part, contact Living Spaces.**

- 1) Attach two mattress rails(E) to two bottom end assemblies(C) with 8 lag bolts and 8 washers, and tighten. **Be sure that the holes in the bottom end posts (legs) are UP for this step!**
- 2) Attach two mattress rails(E) and two guard rails(F) to top end assembly (D) with 16 lag bolts and 16 washers, and tighten. **Be sure that the holes in the Top end posts (legs) are DOWN for this step!**
- 3) **Roll Twin Slat kit out in top bed assembly and stretch from bed end to bed end. Secure with 4 screws in the ends of the two outermost slats, one in each corner of the bed. Center the 3 individual Twin slats in the 3 built in gaps in the slat kit and secure with 6 wood screws on the ends of each individual slat.**
- 4) **Repeat step 3 for Full size slat and individual slats on bottom bed assembly.**
- 5) Place four wooden dowels (G) in the four holes **on the posts (legs) of bottom bed assembly.**
- 6) **Lift the top bunk assembly onto the bottom bunk assembly, ensuring that all 4 dowels are inserted into the holes in the top bunk posts (legs).**
- 7) **Add mattresses not to exceed 7" in thickness and sleep well!**

## SAFETY WARNING

Our Bunk Beds have been tested by an Independent Laboratory and are certified to be in compliance with: ASTM F-1427, "Standard Consumer Safety Specification for Bunk Beds" and U.S. Government specifications 16 Code of Federal Regulations, parts 1213 and 1513.

### **SAFETY WARNINGS**

1. Follow the information on the warnings attached to the upper bunk end structure and on the carton. Do not remove this label.
2. Always use the recommended size mattress or mattress support, or both, to help prevent the likelihood of entrapment or falls.
3. Surface of mattress must be at least five inches(127mm) below the upper edge of guardrails.
4. Do not allow children less than six years of age to use the upper bunk.
5. Periodically, check and ensure that the guardrail, ladder and other components are in their proper position, free from damage and that all connectors are tight.
6. Do not allow horseplay on or under the bed and prohibit jumping on the bed.
7. Prohibit more than one person on upper bunk.
8. Always use the ladder or bed end for entering and leaving the upper bunk.
9. Do not use substitute parts. Contact manufacturer or dealer for replacement parts.
10. Use of a night-light may provide added safety precautions for a child using the upper bunk.
11. If the bunk bed will be placed next to a wall, the guardrail that runs the full length of the bed should be placed against the wall to prevent entrapment between the bed and the wall. (This applies only to bunk beds without two full-length guardrails.)
12. Always use guardrails on both long sides of the upper bunk.
13. The use of water or sleep flotation mattress is prohibited.
14. Keep these instructions for future reference.

### **STRANGULATION HAZARD**

15. Never attach or hang items to any part of the bunk bed that are not designed for use with the bed for example, but not limited to hooks, belts and jump ropes.

### **SIZE OF UPPER AND LOWER MATTRESS AND FOUNDATION**

\* A FOUNDATION IS REQUIRED WITH 3 SLAT CONFIGURATION \*

Your Twin bed is designed to use a mattress 37"-39" in width and 74" - 75" in length.

Your Full bed is designed to use a mattress 52"-54" in width and 74" - 75" in length.

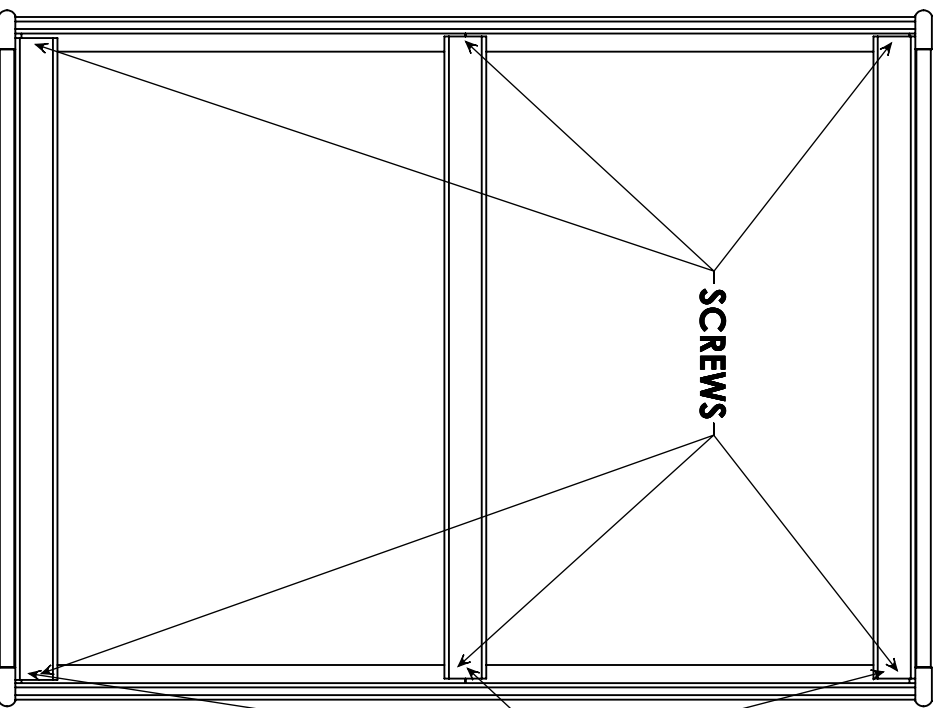
The total thickness of mattress and foundation (slat kit, bunk board, etc.) combined must not exceed 7".

Note: There must be at least 5" from mattress sleeping surface to top edge of guardrail.

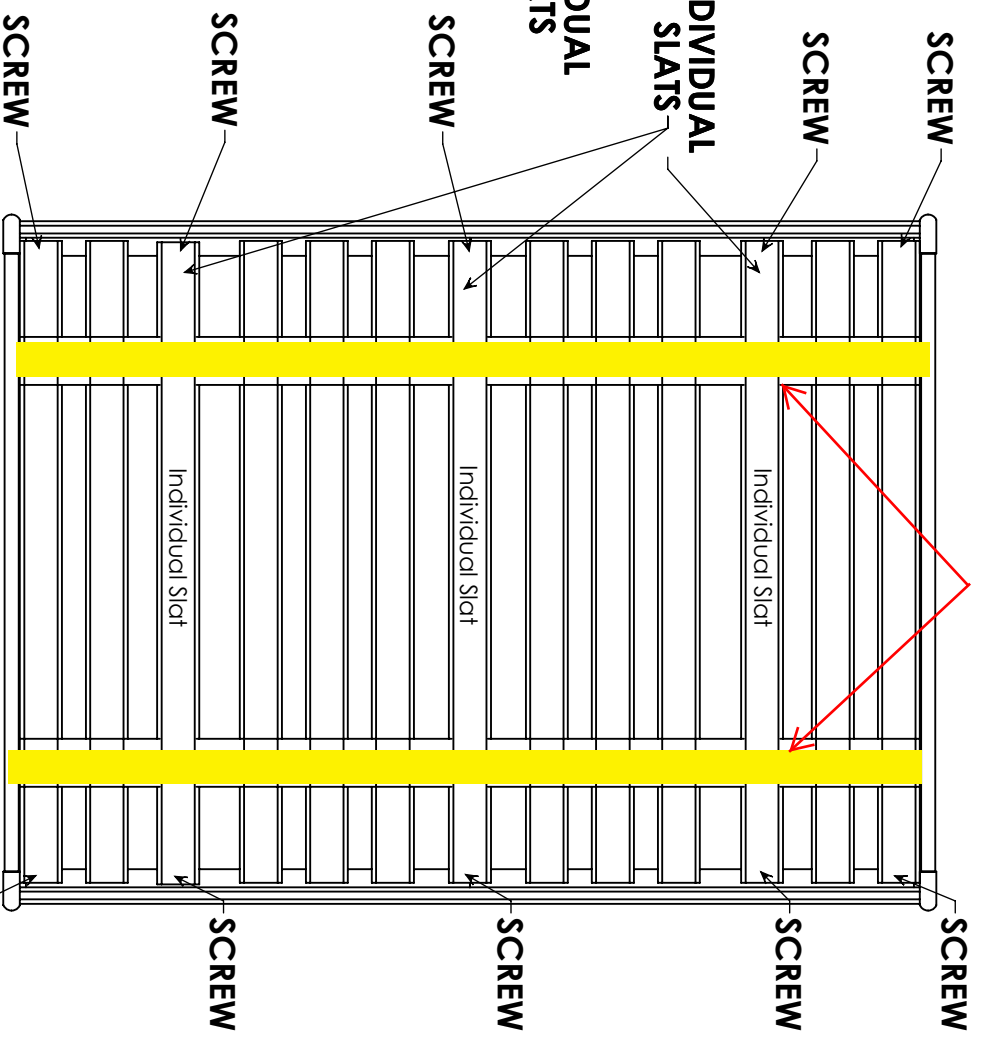
### **REPLACEMENT PARTS**

Replacement parts, including additional guardrails, may be obtained from your Furniture dealer.

When used with a slot roll, the three individual slats should be placed evenly in the gaps and underneath the strapping before fastening.

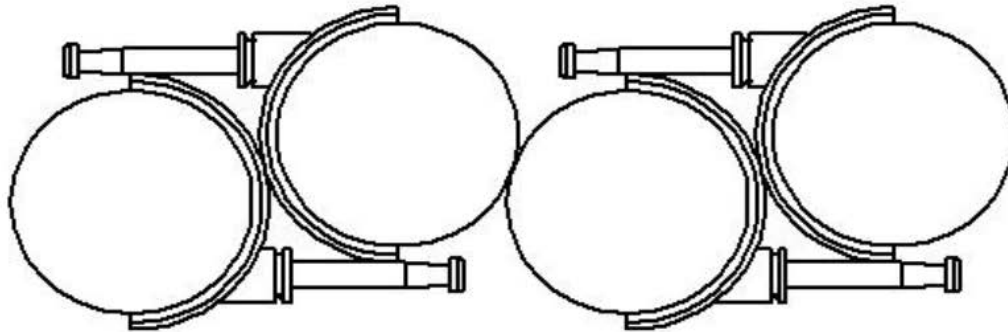


Installation of individual slats for use with Bunkie Board (Bunkie Board sold separately) See your retailer for purchase of Bunkie Board



Installation of individual slats for use with Slot Roll (Slot roll sold separately) See your retailer for purchase of Slot Roll

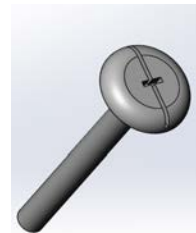
<b><u>MAS90: 5043-43381</u></b>	
<b>TRUNDLE BED HARDWARE</b>	
<b><u>QTY:</u></b>	<b><u>DESCRIPTION:</u></b>
4	CASTERS WITH INSERT
4	ANTIQUE BRASS KNOBS
4	1 1/2" SCREWS



**CASTER KIT**

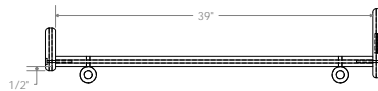
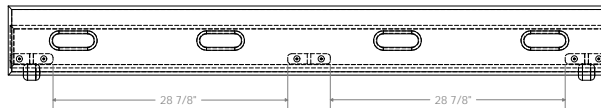
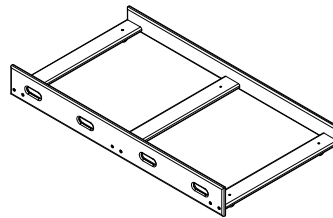


**4 - Antique Brass Knobs**



**4 - 1 1/2" Screws**

**4466 SEDONA**



**\*\*\*NOTE: CASTERS HAVE INSERTS WHICH MUST BE DRIVEN FLUSH WITH THE HOLES DRILLED, BEFORE THE CASTERS ARE INSERTED. ATTEMPTING TO DRIVE THE INSERTS IN WITH THE CASTER WHEELS MAY RESULT IN DAMAGE TO THE WHEELS**

**PARTS LIST:**

- A) Assembled Caster Frame
- B) Bunkie Mattress
- C) 4 Casters w/ Metal Stem
- D) 4 Black Plastic Caster Inserts

**TOOLS REQUIRED:**

Phillips Screwdriver

**ASSEMBLY INSTRUCTIONS:**

**NOTE:**

**Make sure you have all parts before beginning assembly. If you need a part, contact the dealer where you purchased your bed.**

- 1.) Push the 4 caster inserts into the pre-drilled holes on the bottom of the bed. Make sure the inserts sit flush with the holes and do not protrude.  
\*Do no attempt to complete step 1 with the caster stems attached to the caster inserts\*
- 2.) Once all 4 caster inserts are in place, install the caster wheels by pushing the stems of the caster wheels into the inserts and locking them into place.
- 3.) Attach 4 metal knobs to trundle front with the 1 1/2" screws provided. Lay Bunkie mattress in place, and slide under bed or lower bunk.